

## ERL – RESEARCH PARTNERS



### **Ásgrímur Angantýsson, Ph.D., Associate professor**

ICELAND, University of Iceland

**ERL:** ERL I participant; Area 1

**Representative publication title:** *Verb-second in embedded clauses in Faroese*

**Primary research interests:** Micro-comparative syntax and morphology of closely related languages and dialects. Language contact. Educational linguistics. Linguistic proficiency as cultural capital.

**Current projects:** *Modeling the linguistic consequences of digital language contact (PIs: Sigríður Sigurjónsdóttir and Eiríkur Rögnvaldsson). Icelandic as a school subject and language of learning and teaching (PIs: Kristján Jóhann Jónsson and Ásgrímur Angantýsson)*

contact

: [asgriman@hi.is](mailto:asgriman@hi.is)



### **Anna Babicka-Wirkus, PhD**

POLAND, Pomeranian University in Słupsk

**ERL:** ERL II participant; Area 1; ERL Journal editor; ERLA member

**Representative publication title:** *Students (do not) run and (do not) shout. The rituals of resistance as an aspect of youth's self-expression*

**Primary research interests:** resistance in educational institution, critical pedagogy, students' self-expression, philosophy of education, higher education, children's rights, discourse analysis

**Current project(s):** *Discourse of resistance at school*

contact:

[ankababicka@gmail.com](mailto:ankababicka@gmail.com)

### **Kristina Belancic, PhD student**

SWEDEN, Umeå University

**ERL:** ERL II participant; Areas 1 and 3

**Representative publication title:** *Discourses of functional bilingualism in the Sami curriculum in Sweden*

**Primary research interests:** Bilingual and Multilingual Education, Literacy and Oracy in



Indigenous Education, Communication, Curriculum Theory, Syllabus

**Current project(s):** *Language use in Sami schools*

contact:

[kristina.belancic@umu.se](mailto:kristina.belancic@umu.se)



**Bozena Billerey, Senior Lecturer**

FRANCE, Toulouse Catholic University (Institut Catholique de Toulouse)

**ERL :** Area 3

**Representative publication title:** *Correcting the pronunciation of Polish students learning French as a foreign Language with verbo-tonal method. Learning by project in the modern language classroom.*

**Primary research interests:** Correction of pronunciation with verbo-tonal method in language classrooms. Comparative phonetics and phonology: Polish and French. Didactics of learning French as a foreign language. Learning by project in the modern language classroom. Action approach.

**Current project(s):** *Preparation of pedagogical tools for correcting the pronunciation of Polish students learning French*

contact:

[bozena.billerey@ict-toulouse.fr](mailto:bozena.billerey@ict-toulouse.fr)



**Elisa Bitterlich**

GERMANY, Technical University of Dresden

**ERL:** ERL III participant; Areas 1 & 2; ERL Journal's Strand 1-4 Coordinator

**Representative publication title:** *The situational factors on the learners' language - The existence of different language styles in different mathematics classroom situations*

**Primary research interests:** interpretative classroom research (especially primary school mathematics), situational factors on the learners' language, linguistic form of mathematical learning processes, student teachers' orientations about heterogeneity

**Current project(s):** Heterogeneity in teacher education from the start which is a sub-project of "TUD-SYLBER" which is part of the 'Qualitätsoffensive Lehrerbildung', a joint initiative of the Federal Government and the federal states of Germany which aims to improve the quality of teacher training. The programme is funded by the Federal Ministry of Education and Research.

contact:



**Barbara Borowska, PhD**

POLAND, John Paul II Catholic University of Lublin

**ERL:** Area 2

**Representative publication title:** *Polish and French participation in the culture of high school students. Empirical study; The linguistic basis of native language glottodidactics in the educational system of Bronisław Ročławski*

**Primary research interests:** learning to read and write in early school years; language, literary and theatrical education; language communication; intercultural education; pedagogy of culture; Polish education beyond Poland's borders.

**Current project(s):** *Reading efficiency of children in final pre-school groups*

contact:

[barbara.borowska@ymail.com](mailto:barbara.borowska@ymail.com)



**Dragana Božić Lenard, PhD**

CROATIA, Josip Juraj Strossmayer University of Osijek

**ERL:** Areas 2 & 3; ERL Journal's lead editor & Strand 1-2 Coordinator

**Representative publication title:** *A redefined approach to student assessment based on their writing in ESP / Communication skills as a prerequisite for the 21<sup>st</sup> century engineer / Gender differences in political speeches*

**Primary research interests:** ESP/EAP methodology, knowledge transfer, communication skills, gender differences

**Current project(s):** *A redefined approach to students' assessment and foretelling students' success based on their writing in ESP*

contact:

[dragana.bozic@ferit.hr](mailto:dragana.bozic@ferit.hr)

**Krastanka Bozhinova, PhD**

BULGARIA, American University in Bulgaria

**ERL:** Area 1

**Representative publication title:** *Enseignement/apprentissage du français langue étrangère et développement de la compétence plurilingue*

**Primary research interests:** plurilingual and intercultural education; integration of ICT in language teaching and learning; EU, political, and legal terminology



**Current project(s):** *the impact of telecollaborative projects on the development of the plurilingual and pluricultural competence*

contact:

[kbozhinova@aubg.edu](mailto:kbozhinova@aubg.edu)



**Paula Budzyńska, MA; PhD candidate**

POLAND, Nicolaus Copernicus University in Toruń

**ERL:** ERL I, ERL II & ERL III participant; Area 2; ERLA member

**Representative publication title:** *"How can young learners' speaking proficiency be developed? The analysis of speaking activities in selected English language textbooks for early school education in Poland"*

**Primary research interests:** the notion of language in complex systems theory, implementing the CEFR in English language textbooks, the analysis of English language textbooks for early school education and the development of children's L2 productive skills

**Current project(s):** *Opportunities for productive language development within the classroom*

contact: [paulabudzynska@doktorant.umk.pl](mailto:paulabudzynska@doktorant.umk.pl)



**Isaac Calvert, Dr**

OXFORD, University of Oxford

**ERL:** ERL II participant; Areas 1 and 3

**Representative publication title:** *Sacred Language, Sacred Teaching: Hebrew as Holy Tongue and its Effects on Pedagogy*

**Primary research interests:** pedagogy; philosophy of education; ethnography of education; anthropology of education; relationship between education and the sacred

**Current project(s):** *Education and the Sacred: Jewish Ideas of Holiness and the Dynamics of Teaching and Learning: A Case Study from Jerusalem*

contact:

[isaaccalvert@gmail.com](mailto:isaaccalvert@gmail.com)



**Teresa Costa-Pereira, PhD Student**



PORTUGAL, University of Lisbon, Institute of Education

**ERL:** Areas 2 and 3

**Representative publication title:** Compreensão na Leitura num manual de Estudo do Meio.

**Primary research interests:** language education, read and write to learn, understanding expository texts

**Current projects:** Oracy in the school culture; Ler e escrever para aprender (reading and writing to learn)

contact:

[teresa.costa.pereira@hotmail.com](mailto:teresa.costa.pereira@hotmail.com)

### **Pilar Couto-Cantero, PhD**

SPAIN, University of La Coruña, Faculty of Education



**ERL:** ERL Network. Area 2: Language Activity of Children and Area 1: Potential of Language for General Education

**Representative publication title:** *Couto-Cantero, P., & Ellison, M. (2022). InfanCLIL: A model for implementing plurilingual projects in pre-primary in Spain and Portugal. In A. Otto & B. Cortina-Pérez (Eds.), Handbook of CLIL in Pre-Primary Education (pp. xx-xx). Springer. ISBN 978-3031047671*

**Primary research interests:** Teaching and Learning Languages and Cultures (Spanish/English), CLIL, TEFL, Bilingual Education. I also carry out my own research based on a new theoretical model coined by me: "The Textual Transpodidactics Model" (Couto-Cantero, 20214).

**Current project(s):** **1. TRADILEX.** *Audiovisual Translation as a Didactic Resource in Foreign Language Education. Spanish Ministry of Science and Innovation. Cód.: PID2019-107362GA-I00.*

**2. FoBE** *(Future of Bilingual Education). Spanish students' self-perception of the expected usefulness of bilingual education. Spanish Ministry of Science, Innovation and Universities. Cód.: PID2021-127031OB-I00.*

contact:

[pilar.couto@edc.es](mailto:pilar.couto@edc.es)

### **Michał Daszkiewicz, Assistant Professor**

POLAND, University of Gdansk, Institute of Education

**ERL:** coordinator, ERL Conferences co-organiser; Areas 3, 1 and 2; ERL Journal's editor-in-chief and Strand 2-3 Coordinator; ERLA founder and member

**Representative publication title:** *Expressing knowledge as a personal educational event / Personal experiencing of English by Poles*



**Primary research interests:** second language oracy; language educational incidents; gap between reception and production; personal experiencing of spoken English (across nations)

**Current project(s):** *Oracy in the school culture; Opportunities for productive language development within the classroom*

contact: [michal.daszkiewicz@ug.edu.pl](mailto:michal.daszkiewicz@ug.edu.pl); tel. (+48) 509 747 531



**Isabel María Carretero Guzmán, PhD student**

SPAIN, University of Malaga

**ERL:** Area 1

**Representative publication title:** *“Motivation and Anxiety in EFL Vis-À-Vis Integration of ITCs in Higher Education”*

**Primary research interests:** Language Education, Psycholinguistic aspects of teaching and learning English as a second language, influence of affective factors in L2 achievement, integration of ITCs in L2 classroom

**Current project(s):** *To examine the influence of affective factors in L2 achievement in relation to the integration of ITCs in L2 classroom, in order to foster a more effective L2 language teaching and learning in higher education*

contact: [imcarretero@uma.es](mailto:imcarretero@uma.es)

**Anna Dąbrowska, PhD**

POLAND, University of Warsaw

**ERL:** ERL I, ERL II & ERL III participant; Area 4

**Representative publication title:** *The Cultural Activity of Youth and Their Linguistic Worldview, Cultural Factors in Youth Literacy, The Equal and the More Equal. Communicative Competence and Educational Paradoxes, On the Expansion of Adolescent Language as Illustrated by Advertising Messages, Communication Styles of Girls and Boys*

**Primary research interests:** linguistic worldview, linguistic competence, communicative competence, adolescent literacy, adolescent slang, sociolinguistics

**Current project(s):** *Linguistic worldview of values in the parents' adolescent discourse*

contact:





**Hannele Diehl, PhD student**

SWEDEN, Lund University

**ERL:** Area 3

**Representative publication title:** *Quite as a degree modifier of verbs*

**Primary research interests:** Linguistic expression of subjectivity and intersubjectivity, Usage-based (cognitive-functionally oriented) methods of teaching, Learner informal language

**Current project(s):** *Language utterances (as social, cultural and mental phenomena)*

contact:

[hannele.diehl@englund.lu.se](mailto:hannele.diehl@englund.lu.se)



**Oana-Adriana Duță, Ph.D.**

ROMANIA, University of Craiova

**ERL:** ERL IV co-organiser and participant; Area 1; ERLA member

**Representative publication title:** *Sustainable and Solidary Education. Reflections and Practices*

**Primary research interests:** cognitive semantics, phraseology, translation studies, transversal skills associated to foreign language teaching and learning, action-oriented approaches in foreign language teaching

**Current project(s):** *Learning to live together: Modern Perspectives on Transversal Skills in Education for Sustainable and Solidary Development; New Tools for the Intergration of Transversal Skills In Modern Teaching Practice*

contact:

[oana.duta@yahoo.com](mailto:oana.duta@yahoo.com)

**Giuliaa Ferri, PhD**

ENGLAND, University of West London

**ERL:** ERL I participant; Area 4; ERL Journal's Strand 2-4 Coordinator

**Representative publication title:** *The development of ethical communication and intercultural responsibility. A philosophical perspective*

**Primary research interests:** sociolinguistics, language in education, English as an Additional



Language, intercultural education, intercultural ethics, gender and education.

**Current project(s):** safeguarding issues in schools relating to gender based violence. An interdisciplinary project with the Psychology department

contact:

[Giuliana.Ferri@uwl.ac.uk](mailto:Giuliana.Ferri@uwl.ac.uk) \_



### **Maria Formosinho, Profesor**

PORTUGAL, Coimbra University and Portucalense University

**ERL:** Areas 1 and 2; ERLA member

**Representative publication title:** *Emancipatory and critical language education: A Plea for Translingual possible selves and worlds*

**Primary research interests:** Theory of Education, Social Pedagogy, Communication Development

**Current project(s):** work at Portucalense University (Oporto)

contact: [mformosinhosanches@gmail.com](mailto:mformosinhosanches@gmail.com);  
[msimoes@upt.pt](mailto:msimoes@upt.pt)



### **Antónia Estrela**

PORTUGAL, Polytechnic University of Lisbon

**ERL:** Area 1

**Representative publication title:** *Suffixation in a portuguese L2 and foreign language corpus*

**Primary research interests:** L2 and foreign language acquisition by adults and children; transference among languages; foreign language teaching and learning; contributes of linguistics to second language acquisition

**Current project(s):** *teaching Portuguese as a L2 and foreign language*

contact:

[antoniaestrela@esex.ipl.pt](mailto:antoniaestrela@esex.ipl.pt)

### **Marina Fuertes, PhD**

PORTUGAL, Polytechnic Instituto of Lisbon, School of Education; External Researcher - Harvard Medical School - Boston - USA

**ERL:** Area 2





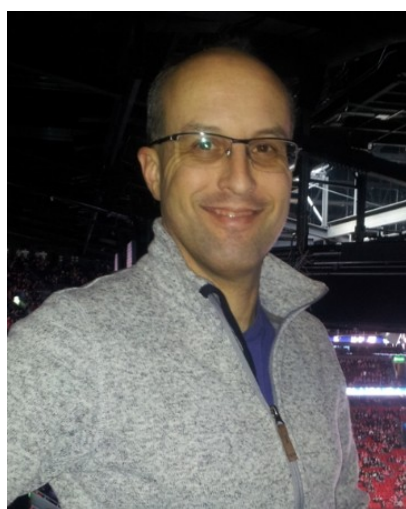
**Representative publication title:** *Fuertes, M., Lopes-dos-Santos, P., Beeghly, M., & Tronick, E. (2006). More than Maternal Sensitivity Shapes Attachment: Infant Coping and Temperament*

**Primary research interests:** Parents-infant attachment, Gender, Play, Child Development, Early Childhood Education and Early Intervention

**Current project(s):** *Mother-infant attachment in extremely prematurely born infants, Gender Studies with Educators and Parents in a Collaborative Task, Parents-infant interaction and communication*

contact:

[marinaf@esex.ipl.pt](mailto:marinaf@esex.ipl.pt)



**Edward Gillian, B.A., BSpPath, MHLthSc (Hons), DipCompProg, PhD candidate**

POLAND, The Jacob of Paradies University in Gorzów Wlkp.

**ERL:** ERL I participant; Area 2

**Representative publication title:** *Przygotowanie do nauki czytania i pisanie w Gminie Bogdaniec - komunikat z badań*

**Primary research interests:** Polish language acquisition, emergent numeracy and numeracy, e-learning, Game Based Learning

**Current project(s):** *The effectiveness of a e-learning tool in teaching the appropriate use of articles in English texts: A quantitative study of Polish middle school students learning English*

contact:

[egillian@ajp.edu.pl](mailto:egillian@ajp.edu.pl)



**Anu Gireesh, PhD Research Fellow (ELE)**

INDIA, English and Foreign Languages University, Hyderabad

**ERL:** ERL II participant; Areas 1, 3

**Representative publication title:** *Developing critical cultural consciousness through English language textbooks*

**Primary research interests:** developing multicultural awareness through English language textbooks, teacher beliefs and attitude, learner motivation

**Current project(s):** *educational policies of India to develop multicultural awareness; cultural elements present in an ESL textbook and recommending a*

tentative framework to develop cultural consciousness through English language textbooks

contact:

[anu.dhijuoops@gmail.com](mailto:anu.dhijuoops@gmail.com)



**M<sup>a</sup> Elena Gómez Parra, PhD. Associate Professor**

SPAIN, University of Córdoba

**ERL:** Area 1; ERL Journal's Strand 2-1 Coordinator

**Representative publication title:** *The implementation of effective dual-language programs*

**Primary research interests:** Bilingual Education; CLIL; Intercultural Education; Implementation of Bilingual Programmes; Toys and Play as Intercultural Constructs; Toys and Play as Opportunities for Multilingual Learning; Early Second Language Acquisition (ESLA)

**Current project(s):** *Implementation of Bilingual Programmes in Spain; Design Thinking and Mindfulness in CLIL; Design of Bilingual Classroom Materials; EFL*

contact:

[elena.gomez@uco.es](mailto:elena.gomez@uco.es)



**Mary Griffith, PhD**

SPAIN, University of Malaga

**ERL:** Area 1

**Representative publication title:** *"CLIL and the Plurilingual University: Orientation for the Reluctant Professor"*

**Primary research interests:** Teacher training for CLIL EMI at the university, Error analysis at proficient levels. Contrastive Didactics: how the contents make instructional strategies shift.

**Current project(s):** Research Group Linguistics and Applied Languages see <http://www.uma.es/media/files/HUM842.pdf> as well as multiple Professional development projects ongoing for University professors teaching through English in areas not typically related to foreign language

contact: [griffith@uma.es](mailto:griffith@uma.es)

**Eleni Griva, dr**

GREECE, University of Western Macedonia

**ERL:** ERL III participant; Areas 1, 2

**Representative publication title:** *Multicultural and citizenship awareness through language: cross thematic practices in language pedagogy*



**Primary research interests:** Language Education, Methodology of teaching a second/foreign language, language learning strategies, bilingualism/multilingualism, Foundations of Bilingual/Multicultural Education, Methods and Materials in Bilingual/SL Education, assessment in language learning, Language Material design

**Current project(s):** *Open Source Multilingual Teaching Materials Forum for Migrant Pupils in Europe*

contact: [egriva@uowm.gr](mailto:egriva@uowm.gr);  
[egriva.efl@gmail.com](mailto:egriva.efl@gmail.com)



**Sabina Halupka- Rešetar, PhD**

SERBIA, University of Novi Sad

**ERL:** Area 2

**Representative publication title:** *The influence of orientation and perceived language competence on ESP students' willingness to read / Request modification in the pragmatic production of intermediate ESP learners*

**Primary research interests:** willingness to communicate in EFL, assessing and developing pragmatic competence in EFL

**Current project(s):** *Opportunities for productive language development within the classroom*

contact:  
[halupks.resetar@ff.uns.ac.rs](mailto:halupks.resetar@ff.uns.ac.rs)



**Kamile Kamile Hamiloğlu, Assist. Prof. Dr. (Dr.)**

TURKEY, Marmara University

**ERL:** ERL I participant; Area 3

**Representative publication title:** *Identity in Second Language Teaching Education*

**Primary research interests:** professional development in SLTE, Reflection in SLTE; Curriculum, Syllabus, and Material Evaluation design in SLTE and EFL; Critical thinking in SLTE and EFL; Neurolanguage

**Current project(s):** *research on professional development and identity in SLTE*

contact:  
[kamile.hamiloglu@marmara.edu.tr](mailto:kamile.hamiloglu@marmara.edu.tr)

**Yasunari Harada, Professor**

JAPAN, Waseda University





**ERL:** Area 1

**Representative publication title:** Data Collection and Annotation of Relatively Spontaneous and Relatively Extended Elicited Utterances by English Learners in Undergraduate Japanese Courses

**Primary research interests:** application of speech and language technology in language assessment, corpus construction, EFL students' utterances

**Current project(s):** Autonomous Mutual Learning among Japanese Learners of English through Interaction; Construction of Linguistics of BA: BA and Emergence of Meaning; Side Effects of Foreign Language

contact:

[harada@waseda.jp](mailto:harada@waseda.jp)



**Mohammed Naser Hassoon. MA, PhD candidate**

ROMANIA: Craiova University; from Iraq

**ERL:** ERL II participant; Area 3

**Representative publication title:** *If the main purpose of teaching a foreign language is to achieve communicative skills, is the teaching of literature still a valid option?*

**Primary research interests:** How can sharing principles of culture, religion, and history, human around the world through the gate of Literature. Quest for identity

I am currently pursuing my doctoral studies at the Faculty of Letters, University of Craiova, Romania during 2015-2018. American Literature

contact:

[mhassoon959@gmail.com](mailto:mhassoon959@gmail.com)



**Çiler Hatipoğlu, Associate Professor**  
TURKEY, Middle East Technical University

**ERL:** Area 3

**Representative publication title:** *L2 apologies in Turkish; Culture, Gender and Politeness: Apologies in Turkish and British English; Analysis of the Social Meanings of the Second Person Pronoun SEN in Turkish*

**Primary research interests:** cross-cultural and intercultural communication; pragmatics; corpus linguistics; sociolinguistics; electronic language; speech acts; interlanguage; acquisition of pragmatic and sociolinguistic competence; metadiscourse; teaching English and Turkish as second/foreign language; discourse analysis; sociophonetics; language testing and assessment



**Current project(s):** acquisition/learning of Turkish as a foreign language in the study abroad context (SAC); interlanguage; the impact of culture on the learning of foreign languages; written and spoken metadiscourse; language assessment literacy of future language teachers

contact: [ciler@metu.edu.tr](mailto:ciler@metu.edu.tr)



**Jens Haugan, Dr. art. / docent**

NORWAY, Inland Norway University of Applied Sciences

**ERL:** ERL I, ERL II, ERL III and ERL IV participant; Areas 1, 3, 4; ERL Network's coordinating team

**Representative publication title:** *"Language diversity in Norway and the question of L1 and L2"*

**Primary research interests:** Language education, Psycholinguistic aspects of teaching and learning a second language, Language diversity in the classroom, Language policies on national level and educational level, Spoken language (dialects) versus official written language(s), Status of languages and language ideologies, Language and the mind, Sociolinguistics, Pragmatics, Comparative linguistics, Attitude and motivation in language learning

**Current project(s):** *Language diversity in Norway and the role and status of the two official Norwegian written languages in school and teacher education.*

contact:

[jens.haugan@inn.no](mailto:jens.haugan@inn.no)



**Martyna Jaskulska, PhD**

POLAND, University of Gdansk

**ERL:** ERL II participant; Area 1

**Representative publication title:** *Difficulties of Polish students with dyslexia in reading and spelling in English as L2. Learning and Individual Differences*

**Primary research interests:** learning English as L2, learning difficulties, spelling mistakes

**Current project(s):** Learning English as L2 – psychological conditionings and the profile of difficulties.

contact:

[szadar@wp.pl](mailto:szadar@wp.pl)

**Leila Kajee, Associate Professor**

REPUBLIC OF SOUTH AFRICA, University of Johannesburg

**ERL:** Areas 1 & 2

**Representative publication title:**



**Primary research interests:** language in education, literacy, decolonisation, postcolonial theory, critical pedagogy, higher education

**Current project(s):** *immigrant literacies, decolonisation in higher education*

contact:

[lkajee@uj.ac.za](mailto:lkajee@uj.ac.za)

### **Laura Kerslake, PhD candidate**

ENGLAND, University of Exeter



**ERL:** ERL I participant; Areas 1 and 3

**Representative publication title:** *Sharing talk, sharing cognition: meaningful classroom interaction as the basis for successful educational outcomes*

**Primary research interests:** collaborative and dialogic learning, the role of philosophy in primary schools as a way of improving children's oracy skills, Philosophy of Education

**Current project(s):** *understanding the Other in the learning process, editor of Theories of Teaching Thinking (forthcoming, Routledge), children's language skill acquisition through philosophical discussion*

contact:

[lk304@exeter.ac.uk](mailto:lk304@exeter.ac.uk)

### **Ljiljana Knežević, PhD**

SERBIA, University of Novi Sad, Faculty of Sciences



**ERL:** Area 1 & 3

**Representative publication title:** *The Influence of Orientation and Perceived Language Competence on ESP Students' Willingness to Read*

**Primary research interests:** EAP/ESP methodology, learning transfer, oral presentation and other academic skills development, course design

contact:

[ljiljana.knezevic@dbe.uns.ac.rs](mailto:ljiljana.knezevic@dbe.uns.ac.rs)

### **Elena Kovacikova, Mgr. Ph.D.**

SLOVAKIA, University in Nitra



**ERL:** ERL I, ERL II , ERL III and ERL IV participant; ERL Network's coordinating team; Area 2; ERL Journal's Strand 2-2 Coordinator;

**Representative publication title:** *Základy didaktiky cudzích jazykov (ABC in Teaching a Foreign Language) - modern approaches in teaching a foreign language*

**Primary research interests:** didactics, language pedagogy, CLIL, teaching English to young and very young learners, teaching a foreign language to children with specific learning differences

**Current project(s):** *Exchange of a Good CLIL Practice Among European Educational Institutions, Teaching Practice in the Centre of a Field Didactics, Field Didactics in the Centre of a Teaching Practice*  
contact:

[ekovacikova@ukf.sk](mailto:ekovacikova@ukf.sk)



**Barbara Kurowska, dr**  
POLAND, University of Cracow

**ERL:** Area 2

**Representative publication title:** *Child at Risk of Dyslexia in Kindergarten*

**Primary research interests:** development of communication skills of kindergarten children, school readiness, compulsory education, stimulating creative language activity

**Current project(s):** *Six-year old child in school reality*

contact:

[b.kurowska@up.krakow.pl](mailto:b.kurowska@up.krakow.pl)



**Andrew Kurowski, PhD student**  
ENGLAND, University of Chichester

**ERL:** ERL II and ERL III participant; Areas 1 and 2

**Primary research interests:** social cultural aspects of language and education

**Current project(s):** *School leadership and educational policy*

contact:

[A.Kurowski@chi.ac.uk](mailto:A.Kurowski@chi.ac.uk)





**Monika Kusiak, dr hab.**

POLAND, Jagiellonian University in Kraków

**ERL:** ERL I and ERL II participant; Area 1; ERLA member

**Representative publication title:** *The dialogic nature of the think aloud study investigating reading*

**Primary research interests:** methods of teaching English, psycholinguistic aspects of foreign language learning, reading in native language and foreign language, role of mother tongue in learning foreign languages, classroom discourse, academic discourse

**Current project(s):** *Learning to read vs. reading to learn*

contact:

[monika.kusiak@interia.pl](mailto:monika.kusiak@interia.pl)



**Vesna Lazović, PhD**

SERBIA, University of Novi Sad

**ERL:** Areas 1 & 3

**Representative publication title:** *"Changing perspectives: Towards alternative assessment in foreign language learning at tertiary level"*

**Primary research interests:** ELT/ESP methodology, intercultural communication, language transfer, self-assessment

**Current project(s):** *The Fostering University Support Services and Procedures for Full Participation in the European Higher Education Area - FUSE TEMPUS Project*

contact:

[lazovicvesna@ff.uns.ac.rs](mailto:lazovicvesna@ff.uns.ac.rs)

**Linda Lin, PhD**

HONG KONG, The Hong Kong Polytechnic University

**ERL:** ERL III participant, Areas 1 & 4; ERL Journal's editorial team

**Representative publication title:** *The impact of the medium of instruction in Hong Kong secondary schools on tertiary students' vocabulary*

**Primary research interests:** vocabulary studies,





corpus analysis and academic writing

**Current project(s):** *Developing a PolyU-Stanford adaptive learning online platform for English and exploratory adaptive assessment for science subjects*

contact: [eclindal@polyu.edu.hk](mailto:eclindal@polyu.edu.hk)



**Anna Lyngfelt, Associate Professor**  
SWEDEN, University of Gothenburg

**ERL:** ERL II; Areas 1, 2, 3

**Representative publication title:** *What difference does it make if words are regarded to be the interface between communication and thought, or 'just words'? / Bilingual students' digital text production*

**Primary research interests:** democratic engagement, media, citizenship, literacy

**Current project(s):** *Development of Scientific Literacy: a multidisciplinary study of teachers, students and texts in multilingual secondary schools / Digital Arenas in Literacy Practices in Early Primary School / Reading between the lines*

contact:

[anna.lyngfelt@gu.se](mailto:anna.lyngfelt@gu.se)



**Marta Łockiewicz, PhD**  
POLAND, University of Gdansk, Institute of Psychology

**ERL:** ERL I and ERL II participant; Area 1

**Representative publication title:** *Difficulties of Polish students with dyslexia in reading and spelling in English as L2. Learning and Individual Differences*

**Primary research interests:** Specific reading and spelling difficulties (including: dyslexia in adults, learning English as L2 in dyslexia, the risk of dyslexia), the development of reading in a semi-transparent orthography

**Current project(s):** *Learning English as L2 - psychological conditionings and the profile of difficulties (also connected to dyslexia)*

contact:

[psymlo@univ.gda.pl](mailto:psymlo@univ.gda.pl)



**Ewa Maciejewska-Stępień, dr**

POLAND, University of Warsaw

**ERL:** ERL II participant; Area 3

**Representative publication title:** *Towards the design of an intercultural syllabus*

**Primary research interests:** bilingual education, CLIL, immersion learning, intercultural communicative competence

**Current project(s):** *psycholinguistic foundations of bilingual education*

contact: [em.stepien@yahoo.pl](mailto:em.stepien@yahoo.pl)



**Tess Maginess, Dr**

NORTHERN IRELAND, Queen's University Belfast

**ERL:** ERL II participant; Areas 3 & 4; ERL Journal's editor

**Representative publication title:** *Cyberlect: Othered idiolects and their role in dialogical education*

**Primary research interests:** adult education, literature and language, imaginative and creative approaches to pedagogy

**Current project(s):** *building an international network to build an international intergenerational arts-based education project with 'othered' older and younger people.*

contact:

[t.maginess@qub.ac.uk](mailto:t.maginess@qub.ac.uk)



**Sladana Maric**

SERBIA, University of Novi Sad

**ERL:** Area 2; ERL Journal's editor;

**Representative publication title:** *Interconnected English Language and Music Learning with Digital Technologies*

**Primary research interests:** CLIL, ESP, digital media in education, integrated learning, interactive learning, language teaching methodology, learning English through music, Music in ELT, role of language in education

**Current project(s):** Project No. III 47020 *"Digital Media Technologies and Socio-educational Changes"*

funded by the Ministry of Education, Science and Technological Development of Republic of Serbia

contact:

[sladjana.elc@gmail.com](mailto:sladjana.elc@gmail.com)



**Gerda Mazlaveckienė, Dr**

LITHUANIA, Vilnius, University of Educational Sciences

**ERL:** ERL II participant, ERL III host; Area 4; ERL Journal's editor; ERLA member

**Representative publication title:** *Developing Students' Cultural Awareness through Foreign Language Studies*

**Primary research interests:** cultural education, development and assessment of cultural competence, teaching/learning culture through language, English language teaching methodology

**Current project(s):** Development of university students' cultural competence; reflective foreign language teaching and learning

contact:

[gerda.mazlaveckiene@leu.lt](mailto:gerda.mazlaveckiene@leu.lt)



**Barbara Muszyńska, PhD**

POLAND, The University of Lower Silesia in Wrocław

**ERL:** ERL II participant; Area 1

**Representative publication title:** *The implementation of effective dual-language programs*

**Primary research interests:** curriculum development in reference to academic language competences; methodology of teaching EFL and CLIL; ways in which thinking skills are linked to language (the symbiosis of verbal and cognitive activities); providing learning opportunities for all students to acquire, share and use knowledge in a lesson (on the way to subject literacy); adapting pedagogies to contextual factors (linguistic and cultural)

**Current project(s):** *University course design for EFL and CLIL teachers working in primary and secondary schools; Course materials design for the students and for the teachers with the above in mind (see research interests); Sharing good practices among teachers;*

contact:

[barbara.muszynska@dsw.edu.pl](mailto:barbara.muszynska@dsw.edu.pl)

**Janice Myck-Wayne, Professor**

UNITED STATES OF AMERICA, California State University





**ERL:** ERL II participant; Area 3

**Representative publication title:** *Meaning-focused elicitation of language as a means to mitigate language delays with kids with and without special needs*

**Primary research interests:** Very young children with special needs and their families, Language Development. Teacher Education and Inclusive Practices

**Current project(s):** *Using Memoirs as Alternative Texts, Inclusive Practices in Early Education*

contact: [jmyck-wayne@fullerton.edu](mailto:jmyck-wayne@fullerton.edu)



**Roderick Neilsen, Dr**

AUSTRALIA, Deakin University

**ERL:** ERL II participant; Area 1

**Representative publication titles:** *The development of knowledge about language in teacher training: what works? / 'Moments of disruption' and the development of expatriate TESOL teachers*

**Primary research interests:** language teacher professional development, student mobility, language testing

**Current project(s):** *An investigation into the experiences of adult English language learners in Australia / The impact of IELTS on career opportunities for migrants to Australia*

contact:

[rod.neilsen@deakin.edu.au](mailto:rod.neilsen@deakin.edu.au)



**Sigríður Ólafsdóttir, PhD**

ICELAND, University of Iceland

**ERL:** ERL I and II participant; Area 2

**Representative publication title:** *The development of vocabulary and reading comprehension among Icelandic second language learners*

**Primary research interests:** Vocabulary, reading comprehension, writing proficiency, longitudinal data

**Current project(s):** *Opportunities for productive language development within the classroom*

contact: [sol@hi.is](mailto:sol@hi.is)





**Aleksandra Ita Olszewska, PhD Student and Fulbright Scholar**  
USA, University of Florida

**ERL:** ERL II participant; Areas 1, 2 and 3

**Representative publication title:** *Translanguaging: A Pedagogical Tool for Equity in Bilingual and Multilingual Education*

**Primary research interests:** Adult Education, Bilingual / Bicultural Education, Diverse Learners, Educational Justice, ESOL, Foreign Language Learning, Higher Education, Immigration Issues, International Education, Multicultural and Minority Education, Second Language and Literacy Development for English Language Learners (ELLs) / Emerging Bilinguals, Teacher Education for English Learners / Emerging Bilinguals, Translanguaging

**Current project(s):** *Project STELLAR; In Pursuit of Pedagogy of Involvement; Diverse Teaching Perspectives on Plagiarism: From Punitive to Pedagogical*

contact:

[aolszewska@ufl.edu](mailto:aolszewska@ufl.edu)



**Irina Polyanskaya, PhD Student**  
DENMARK, Roskilde University

**ERL:** ERL I participant; Area 2

**Representative publication title:** *Second-order false belief reasoning, language and working memory in children with Autism Spectrum Disorder*

**Primary research interests:** Theory of mind, social reasoning, language development, grammar, compositional semantics, developmental disorders, Autism Spectrum Disorder

**Current project(s):** *funding by Velux "Hybrid-Logical Proofs at Work in Cognitive Psychology"*

[http://forskning.ruc.dk/site/en/persons/irina-polyanskaya\(3d4c3df5-46d1-4602-9c95-769e9c329b4a.html](http://forskning.ruc.dk/site/en/persons/irina-polyanskaya(3d4c3df5-46d1-4602-9c95-769e9c329b4a.html)

contact: [irinap@ruc.dk](mailto:irinap@ruc.dk)

**Solzica Popovska, Prof., PhDs**  
MACEDONIA, Cyril and Methodius University

**ERL:** Area 3

**Representative publication title:** *Poetry Translation Dilemmas*

**Primary research interests:** English for Specific



Purposes, translation, Transformative Learning, humanistic methods in ELT

**Current project(s):** *Possibilities of fostering emotional intelligence as a generic competence in translation and interpreting students*

contact:

[solzica\\_popovska@yahoo.com](mailto:solzica_popovska@yahoo.com)



**Eva Reid, Mgr., Phd**

SLOVAKIA, University of Nitra

**ERL:** ERL I participant; Areas 3 & 4; ERL Journal's advisor

**Representative publication title:** *Intercultural aspects in teaching English at primary schools*

**Primary research interests:** development of intercultural communicative competences in English language education, teaching English to gifted pupils, teaching English pronunciation to different age groups

**Current project(s):** *Teaching Practice in the Centre of a Field Didactics, Field Didactics in the Centre of a Teaching Practice; Developing Trans-regional information literacy for lifelong learning and the knowledge economy (DIRECT); Contrastive analysis as an effective supporting method of teaching English pronunciation at primary schools*

contact: [ereid@ukf.sk](mailto:ereid@ukf.sk)



**Alina Reșceanu, PhD, Senior Lecturer**

ROMANIA, University of Craiova

**ERL:** ERL II & ERL III participant; ERL IV host; Areas 2 & 4; ERLA member

**Representative publication title:** *Amount Relative Clauses in English and Romanian: a Minimalist Approach*

**Primary research interests:** language acquisition, language variation, linguistic aspects of teaching and learning a foreign language, current issues in syntax and contrastive grammar, theoretical and computational linguistics and natural language processing

**Current project(s):** developing students' transversal skills and competences, raising intercultural awareness, developing critical thinking in language classes;

contact:

[aresceanu@yahoo.com](mailto:aresceanu@yahoo.com)

**Sarah Rimmington**



ENGLAND, University of Exeter

**ERL:** ERL I participant; Areas 1 and 3

**Representative publication title:** *Sharing talk, sharing cognition: developing meaningful classroom interaction as the basis for successful educational outcomes*

**Primary research interests:** collaborative and dialogic learning, the role of languages and narrative and literary texts in expanding learner perspectives and contributing to distributed cognition.

**Current interests/projects:** *use of literary and narrative texts in language teaching to increase learners' awareness and appreciation of the other*

contact:

[sarah@srimmington.freeserve.co.uk](mailto:sarah@srimmington.freeserve.co.uk)



**Mikołaj Rychło, Associate professor**

POLAND, University of Gdańsk

**ERL:** ERL I participant; Area 1

**Representative publication title:** *Traces of a common proto-language, preserved in modern Polish and English; The Educational Approach to Language Teaching*

**Primary research interests:** historical linguistics, etymology

**Current project(s):** *Polish-English Cognates*

contact: [mrychlo@wp.pl](mailto:mrychlo@wp.pl)



**Raquel Sanchez Ruiz, PhD**

SPAIN, University of Castilla-La Mancha

**ERL:** Area 1; ERL Journal's Strand 1-1 Coordinator; ERLA member

**Representative publication title:** *Improving English Oral Skills through Pair Work and Peer-Peer Dialogue*

**Primary research interests:** Bilingual Education; CLIL; Foreign Language Acquisition/Teaching-Learning; EFL Methodology

**Current project(s):** eTwinning project (2017): eTwinning for Teacher Training Institutes. eTwinning project (2016): TTI (Teacher Training Institutions) Sweden and Spain.

contact: [Raquel.SanchezRuiz@uclm.es](mailto:Raquel.SanchezRuiz@uclm.es)





**Daniela Sorádová, Mgr.**

SLOVAKIA, Constantine the Philosopher University in Nitra

**ERL:** ERL II participant; Area 2

**Representative publication title:** *Strategies for English reading and spelling*

**Primary research interests:** didactics, language pedagogy, teaching English reading and spelling, specific learning differences

**Current project(s):** *Contrastive analysis as an effective supporting method of teaching English pronunciation at primary schools; Practice in the centre of the subject field didactics, subject field didactics in the centre of preparation for practice*

Contact:

[daniela.soradova@ukf.sk](mailto:daniela.soradova@ukf.sk)



**Otilia Sousa, Full Professor**

[www.researchgate.net/profile/Otilia\\_Sousa](https://www.researchgate.net/profile/Otilia_Sousa)

FEUP, Polytechnic Institute of Lisbon

ERL II, ERL III participant; Area 2

**Representative publication title:** *Textos e leitura, escrita e cultura*  
Boa:MediaXXI.

**Research interests:** writing, literacy; Oracy; development and schooling; teacher training

**Current project(s):** ORISC - **ORacy** In the **School** Culture (FCT/1531/31/1/2017/S); Língua e aprendizagem (Language and learning)

contact:

[otilias@esexl.ipl.pt](mailto:otilias@esexl.ipl.pt)



**Bernard Spolsky, Professor emeritus**

ISRAEL, Bar-Ilan University

**ERL:** Area 1

**Representative publication title:** *The Cambridge Handbook of Language Policy; Handbook of Educational Linguistics*

**Primary research interests:** language policy, language management, language testing

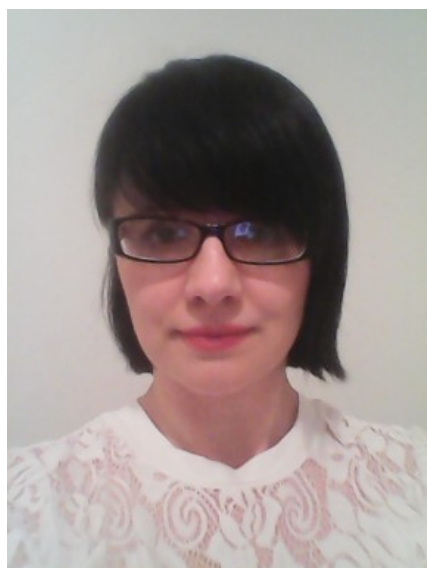
**Current project(s):** *Language policy in colonies and*



their successor states

contact:

[bspolsky@gmail.com](mailto:bspolsky@gmail.com)



**Violeta Stojicic, PhD**

SERBIA, University of Nis

**ERL:** Area 3

**Representative publication title:** *Crosslanguage research on encoding coextension paths in English (L2) to Serbian (L1) translation: an empirical study*

**Primary research interests:** Systemic Functional Linguistics, Text Linguistics, Lexicology, Cognitive Linguistics, Contrastive language studies

contact:

[violeta.stojicic@filfak.ni.ac.rs](mailto:violeta.stojicic@filfak.ni.ac.rs)

**Chizuko Suzuki, Visiting Prof. (Phd)**

JAPAN, Nagasaki Junshin Catholic University

**ERL:** ERL II, ERL III participant; Areas 1 and 3

**Representative publication title:** *Searching for Clues to Fostering 3C Components of Japanese Students' Global Competence: Critical Thinking, Creativity and Collaboration*

**Primary research interests:** Impact of language on thinking, The effect of ICT for fostering critical thinking, Development of -learning materials and system for fostering critical thinking competence

**Current project(s):** *Fostering Critical Thinking Competence Required for Collaborative Creation in International Projects*

contact:

[suzuki.junshin@gmail.com](mailto:suzuki.junshin@gmail.com)



**Lidia Taillefer De Haya, PhD**

SPAIN, University of Malaga

**ERL:** Area 1

**Representative publication title:** *Information and Communication Technologies in English for Specific*



### *Purposes*

**Primary research interests:** English Language Teaching, Psycholinguistics, Sociolinguistics and Translation

**Current project(s):** Head of the Research Group 'Linguistics and Applied Languages' <[http://ofertaidi.uma.es/humanidades\\_6.php](http://ofertaidi.uma.es/humanidades_6.php)>, as well as Convenor of the 'Research Network on Academic Writing in English as a Foreign Language' in the International Association of Applied Linguistics <http://www.aila.info/en/research/list-of-research.html>  
contact: [ltaillefer@uma.es](mailto:ltaillefer@uma.es)



### **Monica Tilea, Associate Professor**

ROMANIA, University of Craiova

**ERL:** ERL II & ERL III participant; ERL IV host; Area 1; ERLA member

**Representative publication title:** *Transversal Skills Development in Modern Teaching Practice: a Good Practice Guide*

**Primary research interests:** image-word relationship, reception and reader-response theories, transversal skills associated to foreign language teaching and learning, co-construction of an effective communication in foreign language teaching (with a focus on the analysis of the learner's response), literary texts and action-oriented approaches in foreign language teaching

**Current project(s):** *Acteurs du territoire pour une éducation à la citoyenneté mondiale; Learning to live together: Modern Perspectives on Transversal Skills in Education for Sustainable and Solidary Development*  
contact:

[mtilea2000@yahoo.com](mailto:mtilea2000@yahoo.com)



### **Vinh To, Dr**

AUSTRALIA, University of Tasmania

**ERL:** Areas 1, 2, 3

**Representative publication title:** *Applying Halliday's linguistic theory in qualitative data analysis*

**Primary research interests:** Applied and educational linguistics, systemic functional linguistics, English, TESOL and languages education

**Current project(s):** *Early language learning in Australian and Vietnamese early childhood contexts; Languages education in Tasmanian primary and secondary schools; Teacher' use of Asian Literature in Tasmanian primary and second schools*

contact:

[vinh.to@utas.edu.au](mailto:vinh.to@utas.edu.au)



**Anna Larysa Wasilewska, dr hab., prof. nadzw.**

POLAND, University of Gdansk, Institute of Education

**ERL:** ERL I and ERL II co-organiser & participant; Area 4

**Representative publication title:** *Archetypes of the children's world. The worlds of imagination in narratives of children*

**Primary research interests:** children's narration; linguistic matrixes of reality interpretation; language image of the world;

**Current project(s):** *Oracy in the school culture*

contact:

[anna.wasilewska@ug.edu.pl](mailto:anna.wasilewska@ug.edu.pl)



**Ryszard Wenzel, Prof.**

POLAND, University of Gdansk

**ERL:** ERL I participant; Area 1

**Representative publication title:** *The Education of a Language Teacher*

**Primary research interests:** philosophy of education, linguistics, teaching modern languages, (conscious) bilingualism, learning motivation

**Current project(s):** *Language and the Quality of General Education*

contact: [karo\\_ata@hotmail.com](mailto:karo_ata@hotmail.com)



**Sally Zacharias, PhD researcher, teaching fellow**

SCOTLAND, University of Glasgow

**ERL:** ERL II participant; Area 1

**Representative publication title:** *Knowledge About Language from a Cognitive Linguistics Perspective: What content teachers might want to know*  
[https://baalweb.files.wordpress.com/2017/01/baalnews\\_1101.pdf](https://baalweb.files.wordpress.com/2017/01/baalnews_1101.pdf)

**Primary research interests:** educational linguistics, knowledge about language, role of language in construction of knowledge, application of cognitive linguistics to education.



**Current project(s):** *Integrating Knowledge about Language (KAL) into subject classes in secondary Initial Teacher Education (ITE) Programmes to support EAL learners' subject literacies*

contact:

[Sally.Zacharias@glasgow.ac.uk](mailto:Sally.Zacharias@glasgow.ac.uk)



**Deborah K. Zuercher, Dr., PhD Professor**  
HAWAII, University of Hawaii at Manoa

**ERL:** ERL II participant; Area 1

**Representative publication title:** *The E*

**Primary research interests:** multilingual teacher education, culturally-responsive and place-based pedagogy, qualitative action research

**Current project(s):** *Teacher education partnerships in multilingual Pacific nations including Hawaii, American Samoa, and the Republic of Marshall Islands; Place-based rural education in Thailand; Charter Secondary School Founding Board Chair in Hawaii.*

contact:

[zuercher@hawaii.edu](mailto:zuercher@hawaii.edu)

..BEING COMPLETED

[www.educationalroleoflanguage.ug.edu.pl](http://www.educationalroleoflanguage.ug.edu.pl)  
[www.edukacyjnarolajęzyka.ug.edu.pl](http://www.edukacyjnarolajęzyka.ug.edu.pl)